

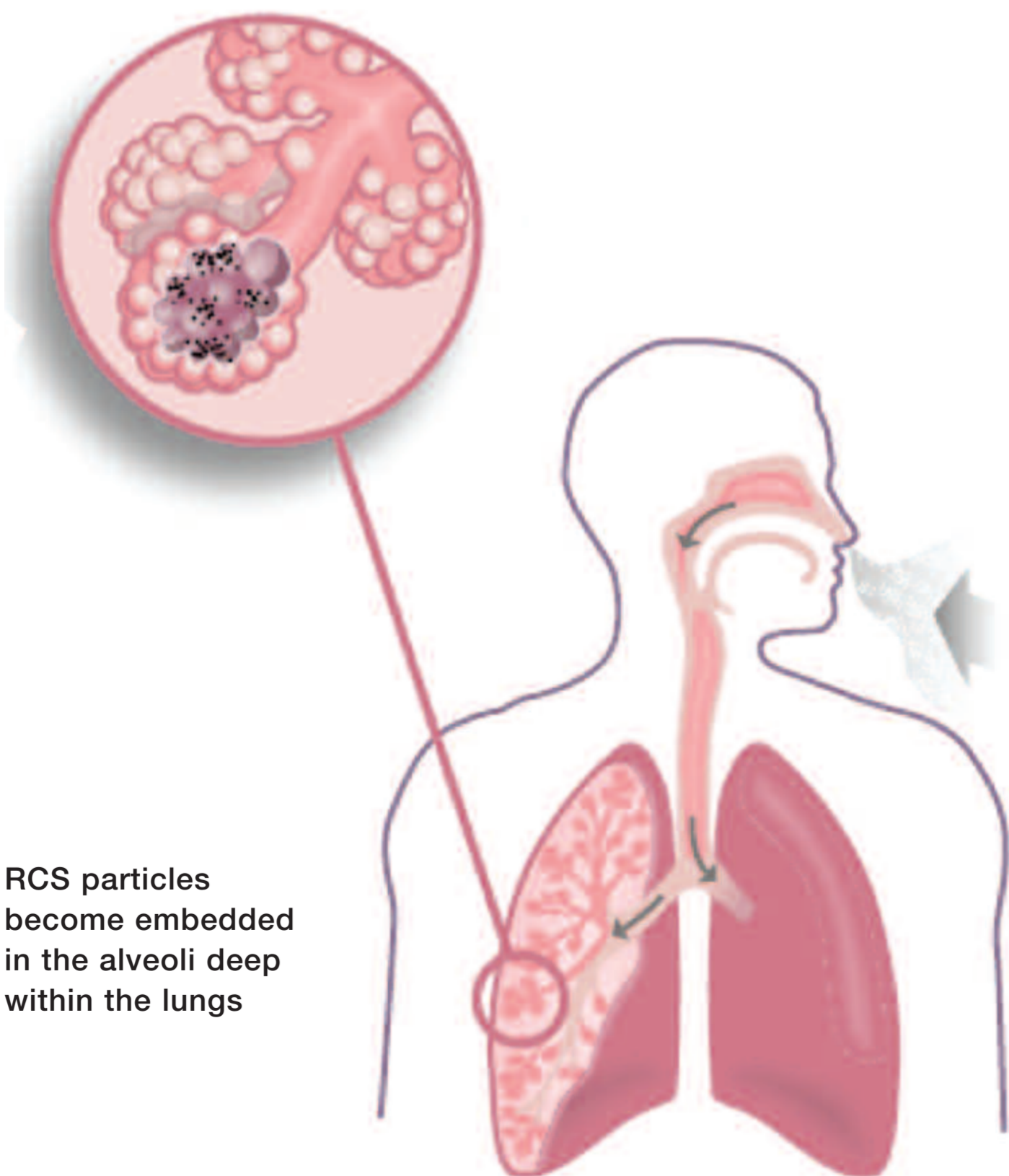
DANGERS OF DUST SAFETY GUIDE

There are some tasks where the risk of exposure to dangerous dust is high, whether directly involved in the activity or not. Because RCS carries a health risk it has been classified as a hazardous substance under the Control of Substances Hazardous to Health Regulations (COSHH) 2002.

What are the risks?

When you breathe in air containing dust, the hairs and mucus in your nose and throat trap the large dust particles are 'respirable' meaning they are carried deep into the lungs where oxygen is extracted from the air. The RCS particles are deposited here causing inflammation and scarring known as silicosis, which makes breathing more difficult and increases the risk of developing lung infections and lung cancer.

Silicosis can vary in severity from mild to severe depending on the levels of exposure. Typically, the symptoms do not develop until after twenty or more years of constant exposure and often after retirement. The early symptoms are shortness of breath, a dry cough and a general feeling of ill health and as the disease progresses the symptoms become more severe.



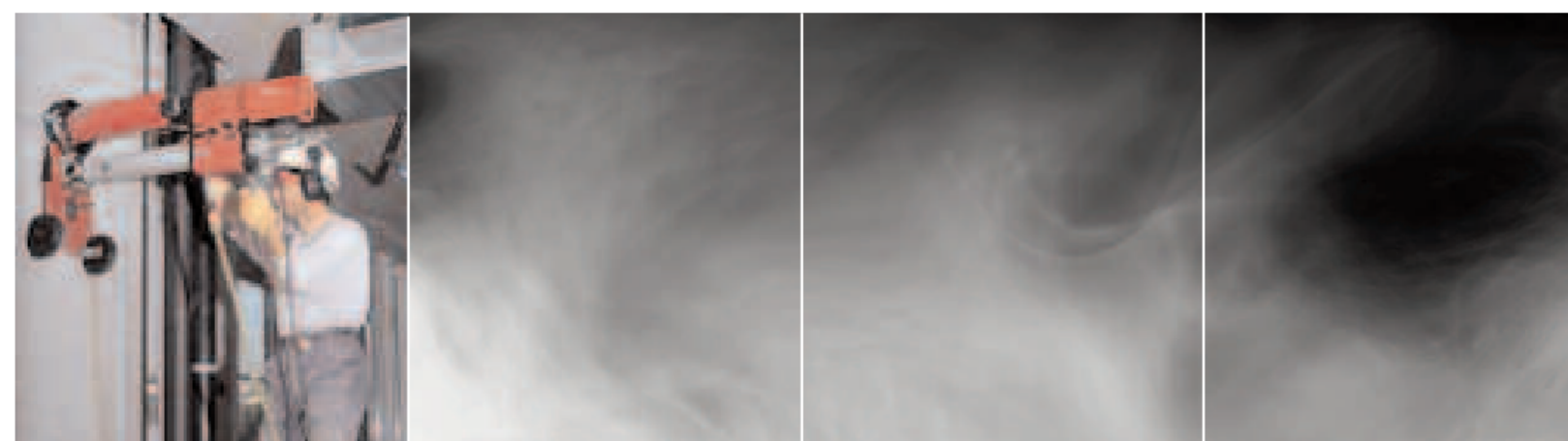
RCS particles become embedded in the alveoli deep within the lungs

The regulations require employers to :

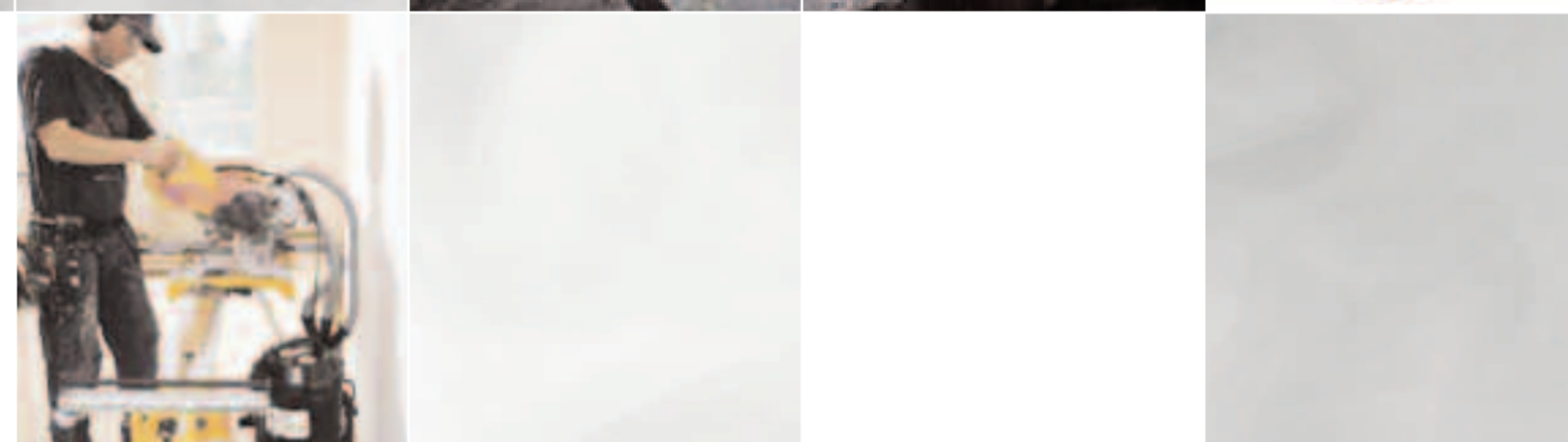
- Assess the risks to health and decide what controls are needed;
- Use those controls and make sure workers use them;
- Make sure the controls are working properly;
- Inform workers about the risks to their health;
- Train workers.

What can be done?

Dust suppression



Dust extraction



Or alternative method?



If in doubt ASK

For further information please contact:

Michael Lydon
(01698) 282042
michael@frasertoolhire.co.uk

© Fraser Tool Hire Ltd 2009

FRASER TOOL HIRE LIMITED,
 BOTHWELL ROAD, HAMILTON, ML3 0DW
 TEL: 01698 282042 ACCOUNTS
 FAX: 01698 281503
 HIREDISK FAX: 01698 201271
 EMAIL: HIREDISK@FRASERTOOLHIRE.CO.UK

WWW.FRASERTOOLHIRE.CO.UK